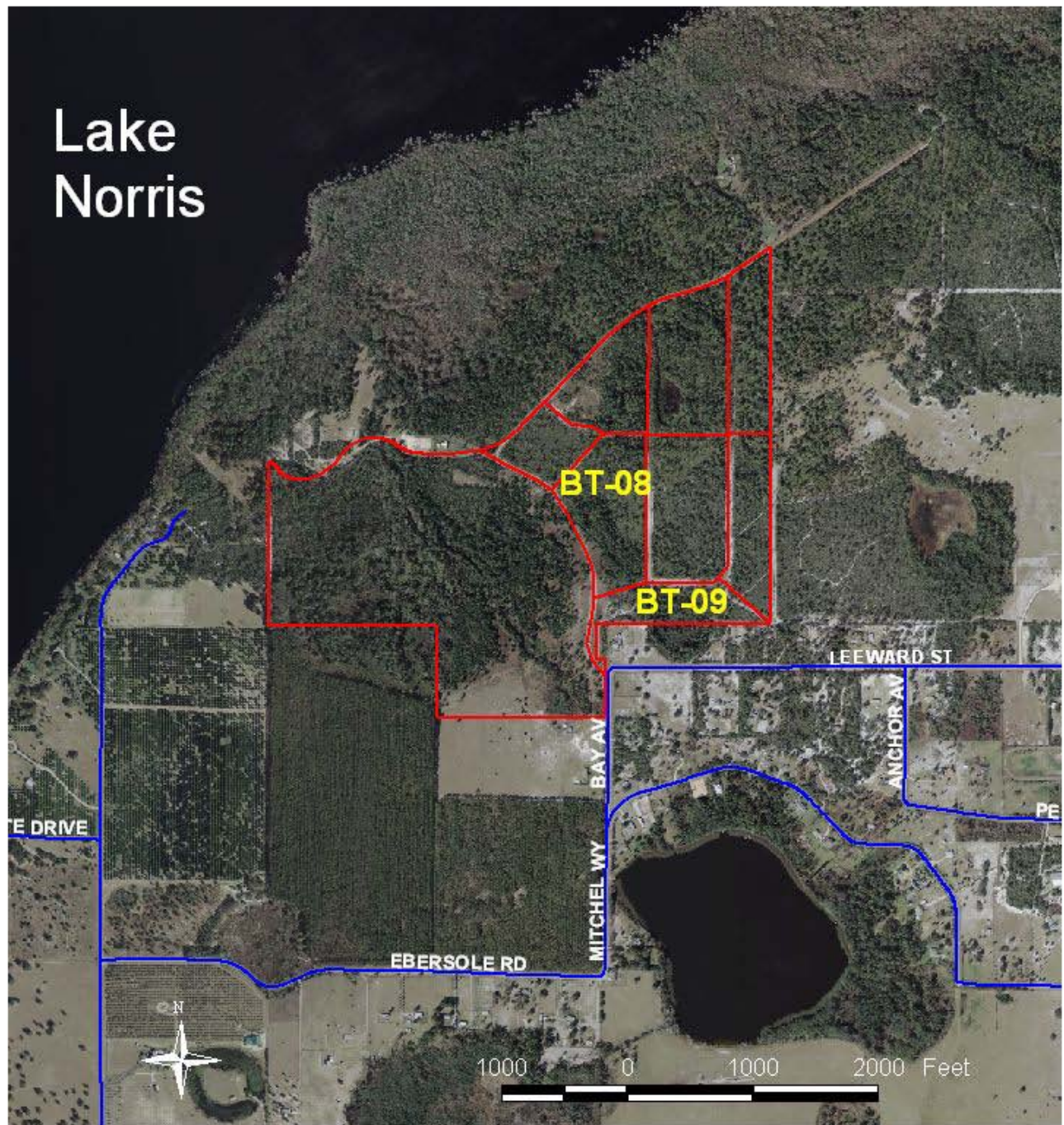


Lake
Norris



Bear Track Preserve Burn Unit Map

- BT-08** - 16 ac.; pine flatwoods, bay head; smoke corridor may be to the SW, W, NW, N, NE or E.
- BT-09** - 9.5 ac.; pine flatwoods, bay head; smoke corridor may be to the SW, W, NW, N, NE or E.

BT-08 – This **16 acre** unit is located immediately east of the entrance road. It is composed mostly of pine flatwoods, with a large bay head which runs from the northwest corner to the southern end of the unit. The bay head may be burned separately from the flatwoods if there is not sufficient water in the bay head to avoid starting a muck fire. Acceptable smoke management plans would allow the smoke plume to move in any direction from the northwest to the east.

BT-09 – This **9.5 acre** unit is located along the southern boundary of the Preserve, east of the entrance road. It is composed mostly of pine flatwoods, with a large bay head which runs from the northwest line to the southern end of the unit. The bay head may be burned separately from the flatwoods if there is not sufficient water in the bay head to avoid starting a muck fire. Acceptable smoke management plans would allow the smoke plume to move in any direction from the northwest to the northeast.