



## BURN PRESCRIPTION

**DOF Authorization #:** \_\_\_\_\_ **Customer #:** \_\_\_\_\_

**Prescription Prepared by:** \_\_\_\_\_ **Biagio J. Gugliotti** \_\_\_\_\_ **Date:** \_\_\_\_\_ **2/27/2008** \_\_\_\_\_

**Burn Boss:**

\_\_\_\_\_ **Biagio J. Gugliotti** \_\_\_\_\_  
 Name Signature Date of Burn

**Customer Number:** \_\_\_\_\_ **Certified Burner Number:** \_\_\_\_\_

**Property Manager:**

\_\_\_\_\_ **Patricia Burgos** \_\_\_\_\_  
 Name Signature Date

**Executive Director:**

\_\_\_\_\_ **Mike Perry** \_\_\_\_\_  
 Name Signature Date

**I. Burn Unit Location**

<b>Preserve Name:</b>	Sawgrass Island Preserve	<b>Management Unit:</b>	SI-01
<b>Land Owner:</b>	Lake County Water Authority	<b>Land Owner #:</b>	
		<b>County:</b>	Lake
<b>Sec.</b>	6	<b>Twn.</b>	18 S
		<b>Rng.</b>	26 E
<b>Lat.</b>	28° 57' 16"		<b>Long.</b> 81° 44' 33"
<b>DOF Authorization #:</b>		<b>Customer #:</b>	

## II. Management Unit Description

	<b>Management Unit Area</b>	40 Acres	<b>Management Unit Perimeter</b>	7920 ft.
1.	<b>Burn History</b>	None		
2.	<b>Ground Cover</b>	Bahia and other grasses		
3.	<b>Understory</b>	Pine Saplings		
4.	<b>Overstory</b>	Sparse Pines		

5.	<b>Vegetation Types</b>	<b>Fuel Model</b>	<b>% of Unit Area</b>	<b>% Herbaceous</b>	<b>Average Fuel Height</b>
	Planted Pines	2	70%	80%	24 in.
	Oak Hammock	9	5%	10%	12 in.
	Herbaceous Marsh	1	25%	80%	36"

### 6. Management Unit Narrative Description

Unit is planted, longleaf pines with a grass (bahia) groundcover and a few mature pines. Two herbaceous ponds are located on the northern end of the unit. There is also some oak hammock located east of the marshes.

## III. Management Unit Objectives

### 1. Resource Management Objectives

a.	Consume 90 % of herbaceous fuels
b.	Top kill 80 % of hardwoods
c.	Less than 40% mortality, (some mortality would help reduce planted pine density)

## IV. Fuel and Weather Prescription

	<b>Required Parameters</b>			<b>Preferred</b>	<b>Actual</b>
Air Temperature (°F)	40	to	90	70	
RH (%)	35	to	80	50	
20' Wind Direction	N	to	W	NW	
20' Wind Speed (mph)	3	to	15	8	
Transport Wind Direction	N	to	W	E	
Transport Wind Speed (mph)	8	to	25	15	
Mixing Height (ft)	1700	to	6000	>3000	
Dispersion Index	35	to	70	60	
KBDI	100	to	650	<500	
Days Since 0.5 in. Rain	>2			2	
Fine Fuel Moisture	8	to	12	10	
Flame Length (ft)	1	to	10	4	
Rate of Spread (ft/min)	10	to	40	20	

## V. Managing the Burn

### 1. Fire Break Preparation:

All lines will be disked to mineral soil.

### 2. Equipment Required:

Brush Trucks	2	ATVs	1	Water Tank	0	
Tractor with Disk	1	DOF Dozer	0			

### 3. Personnel Required:

4

### 4. Firing Techniques and Ignition Patterns:

Starting in the southern point of the unit, we will set a test fire to observe smoke and fire behavior. We will then ignite north along the eastern boundary. We may then employ strip-head and flanking fires to complete the unit.

### 5. Fire Behavior Narrative:

In the planted pine area, fire should move quickly through the fine fuels. Fire should move quickly through the marsh, but may have a hard time penetrating the shrubby fringe. Under the oak hammock, fire will move slowly, or not at all.

### 6. Holding:

One engine will work behind each igniter, making sure the blackline burns to the plow line but does not cross it. The igniter will stay in communication with their holding team to make sure they do not get too far ahead.

### 7. Fire Sensitive Areas:

Homes along the northern and western boundaries of the Preserve.

### 8. Smoke Management Plan:

There are no smoke sensitive locations within five miles of the burn units.  
Light fuels should produce minimal smoke

### 9. Smoke Management Objectives:

a.	Keep smoke away from the homes along the northern and western boundaries of the Preserve.
b.	Keep smoke off of Thomas Boat Landing Road.
c.	

### 10. Safety Zones:

Parking area to the south.

### 11. Escape Routes:

The fire lines south to the parking lot.

### 12. Secondary Control Lines:

There are no secondary lines to the north or west since the lines are along the preserve boundary, however, there is pasture

beyond the fence and in case of an escape, the fence could be cut and a control line cut. To the southeast, unit 15 could be burned out to the causeway. Unit 2 does not have any control lines, but it is a moist hammock.

**13. Fire Escape Response Procedure:**

If fire escapes the lines, report it to the burn boss immediately. Fight the spot aggressively, but if it cannot be contained, contact DOF.

**14. Potential Hazards to Crew:**

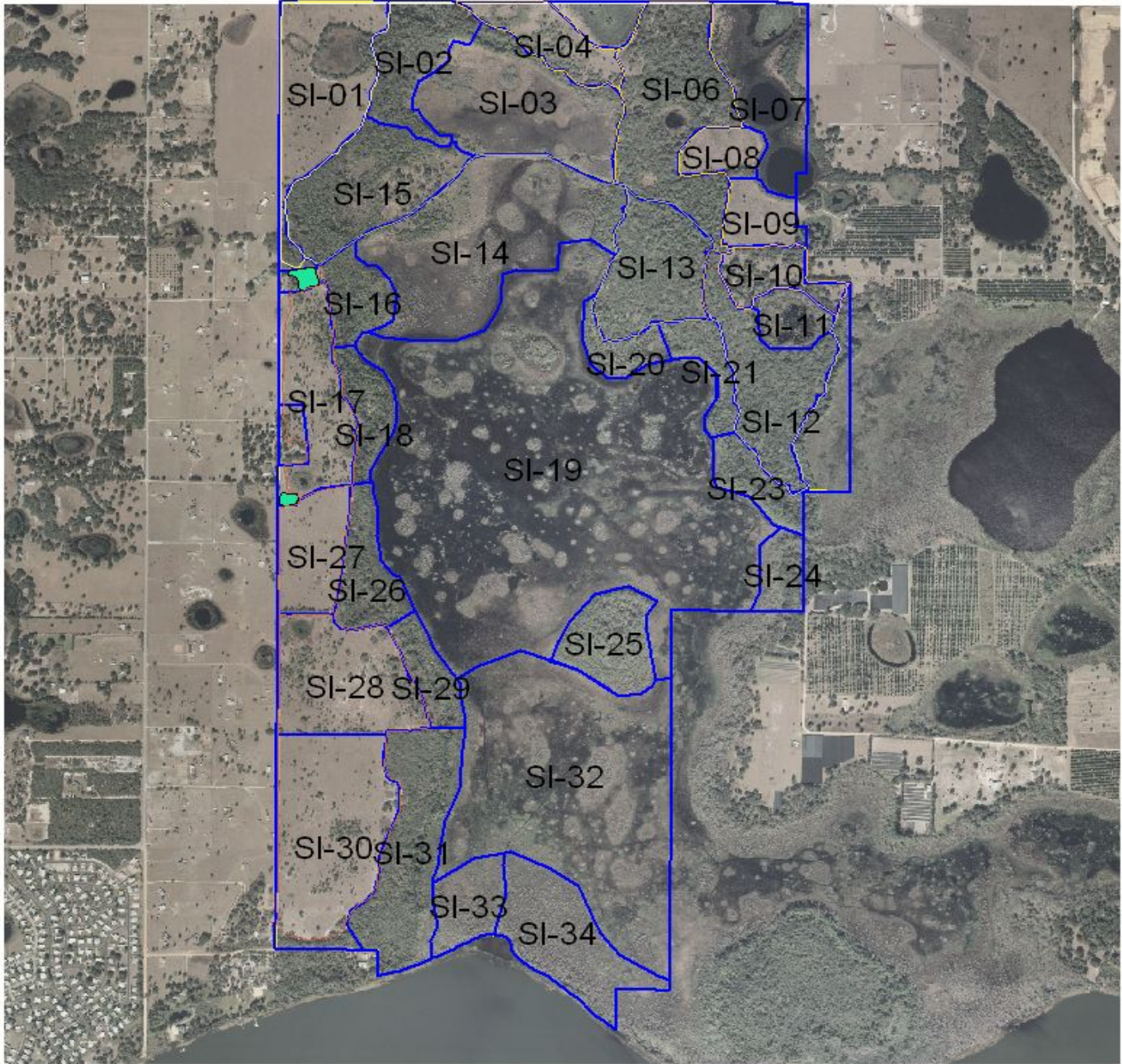
Heat, equipment, gopher tortoise holes.

**15. Water Sources:**

Garden hose at site residence. Neighbor on Sawgrass Island Road has a large diameter water spigot next to the road. Thomas boat ramp.

**16. Mop-up Procedure:**

We will mop-up 50 feet inside the perimeter and any heavy fuel items which may create a smoke problem.

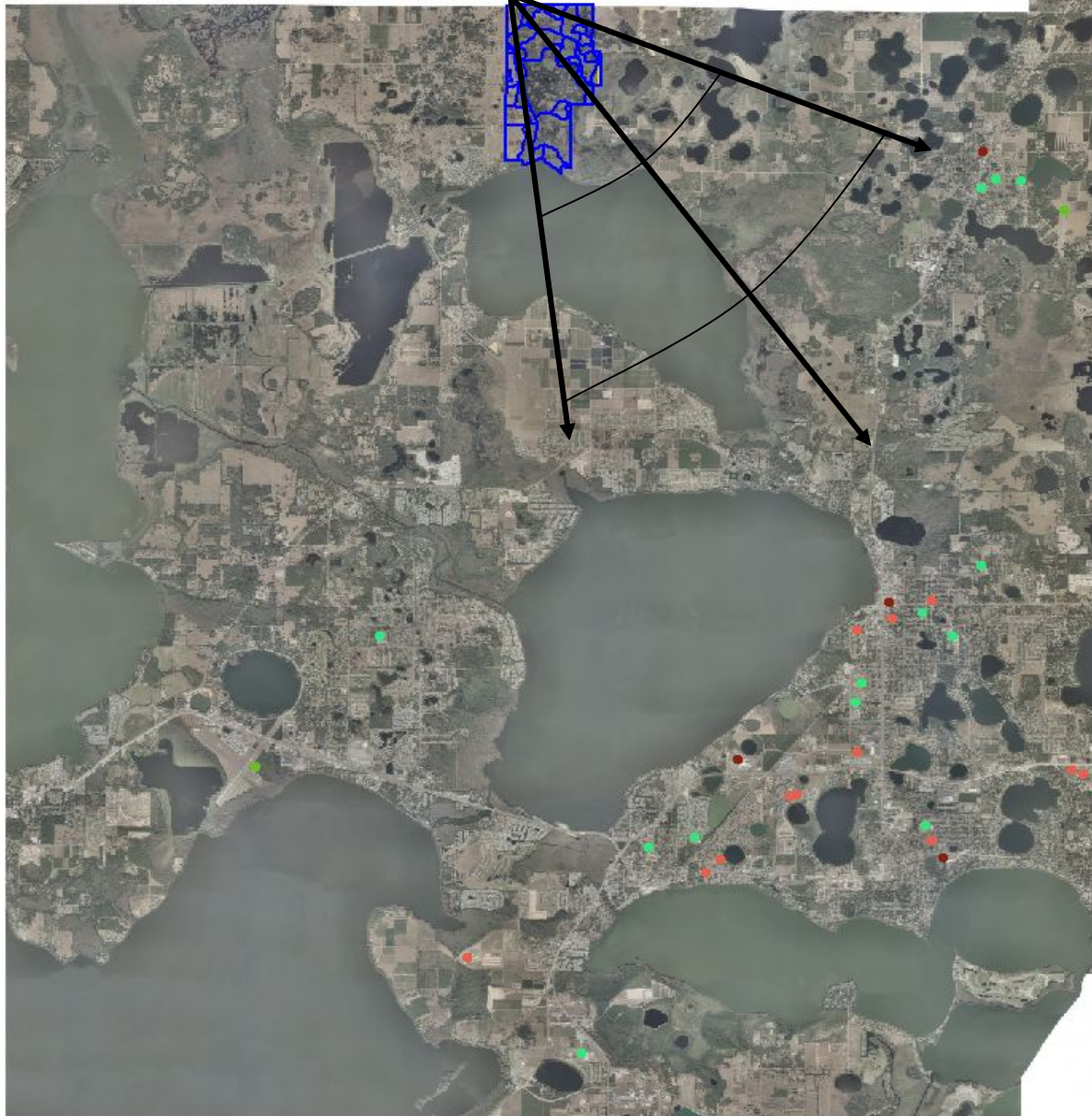


Sawgrass Island Preserve  
Burn Unit Map

Map 4



- Sawgrass-trails.shp
- bear prairie trail
- bent pine trail
- bog button trail
- cactus trail
- hammock trail
- hammock trail purple
- north-loop
- sawgrass-causeway trail
- Parking Area
- Management-units.shp
- Boundaries



# Sawgrass Island Preserve Smoke Screen Map



## Legend

- Schools.shp
- Hospitals.shp
- Assets\_Listing\_Facilities.shp
- Airports.shp
- ManagementUnits.shp
- Boundaries